

# SUMMARY OF MORTALITY VITAL STATISTICS

(Provisional Data, New Mexico Residents)

Data in this report reflect record flow by month of receipt and process rather than by month of occurrence.

Feb-03

COUNTY	ALL DEATHS		INFANT DEATHS		NEONATAL		POSTNEONATAL		FETAL DEATHS	
	This Month	Year To Date	Year To Date	Year To Date	Year To Date	Year To Date	Year To Date	Year To Date	Ratio per 1000 live births	Year to Date
<b>State Total</b>	<b>1,130</b>	<b>3,533</b>	<b>42</b>	<b>33</b>	<b>9</b>	<b>33</b>	<b>9</b>	<b>6.9</b>		
<b>DISTRICT 1</b>	<b>491</b>	<b>1,764</b>	<b>26</b>	<b>21</b>	<b>5</b>	<b>21</b>	<b>5</b>	<b>9.5</b>		
Bernalillo	303	1,100	15	12	3	12	3	9.1		
Cibola	9	38	1	1	0	1	0	0.0		
McKinley	23	112	4	2	2	2	0	0.0		
San Juan	74	227	3	3	0	3	0	9.6		
Sandoval	41	140	1	1	0	1	0	14.2		
Torrance	9	26	0	0	0	0	0	0.0		
Valencia	32	121	2	2	0	2	0	25.0		
<b>DISTRICT 2</b>	<b>202</b>	<b>551</b>	<b>5</b>	<b>3</b>	<b>2</b>	<b>3</b>	<b>2</b>	<b>3.1</b>		
Colfax	11	32	1	1	0	1	0	0.0		
Harding	0	3	0	0	0	0	0	0.0		
Los Alamos	13	26	0	0	0	0	0	0.0		
Mora	4	11	0	0	0	0	0	0.0		
Rio Arriba	19	80	1	1	0	1	0	0.0		
San Miguel	30	95	0	0	0	0	0	0.0		
Santa Fe	98	248	3	1	2	1	2	6.3		
Taos	25	48	0	0	0	0	0	0.0		
Union	2	8	0	0	0	0	0	0.0		
<b>DISTRICT 3</b>	<b>206</b>	<b>643</b>	<b>8</b>	<b>6</b>	<b>2</b>	<b>6</b>	<b>2</b>	<b>7.4</b>		
Catron	3	9	0	0	0	0	0	0.0		
Dona Ana	110	282	3	2	1	2	1	0.0		
Grant	31	80	1	1	0	1	0	65.6		
Hidalgo	5	13	0	0	0	0	0	0.0		
Luna	2	75	0	0	0	0	0	0.0		
Otero	18	77	4	3	1	3	1	13.9		
Sierra	26	69	0	0	0	0	0	0.0		
Socorro	11	38	0	0	0	0	0	0.0		
<b>DISTRICT 4</b>	<b>231</b>	<b>575</b>	<b>3</b>	<b>3</b>	<b>0</b>	<b>3</b>	<b>0</b>	<b>0.0</b>		
Chaves	62	151	2	2	0	2	0	0.0		
Curry	25	72	1	1	0	1	0	0.0		
DeBaca	4	9	0	0	0	0	0	0.0		
Eddy	50	129	0	0	0	0	0	0.0		
Guadalupe	7	16	0	0	0	0	0	0.0		
Lea	62	120	0	0	0	0	0	0.0		
Lincoln	11	30	0	0	0	0	0	0.0		
Quay	5	17	0	0	0	0	0	0.0		
Roosevelt	5	31	0	0	0	0	0	0.0		

New Mexico Department of Health - Public Health Division  
**Office of New Mexico Vital Records & Health Statistics**  
 1105 South St. Francis Drive  
 P.O. Box 26110  
 Santa Fe, NM 87502-6110

PRESORTED  
 STANDARD  
 US POSTAGE PAID  
 SANTA FE, NM  
 PERMIT #70

To receive the New Mexico Health Statistics regularly, call (505) 827-2532

# NEW MEXICO HEALTH STATISTICS

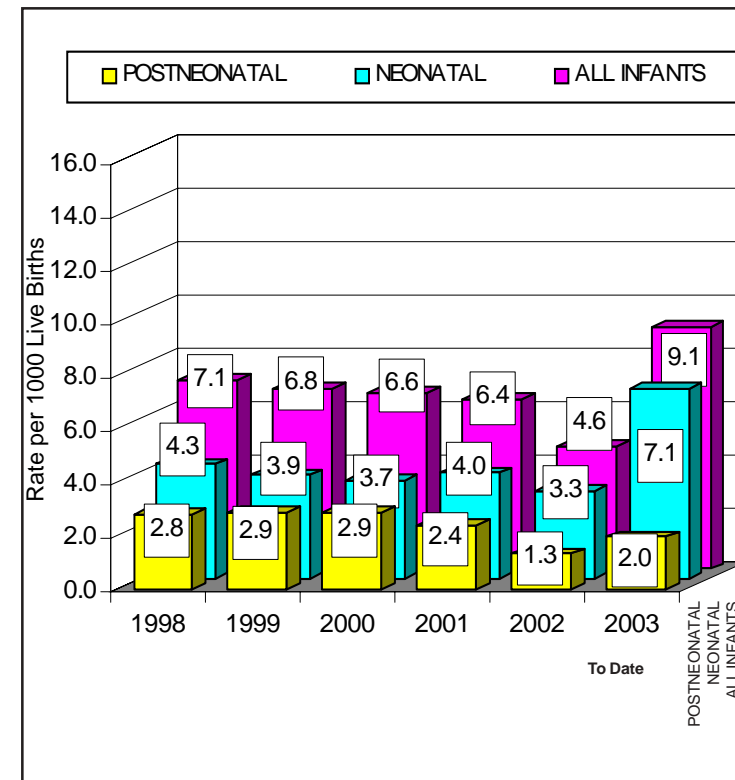
OFFICE of NEW MEXICO VITAL RECORDS and HEALTH STATISTICS

Public Health Division ♦ Department of Health

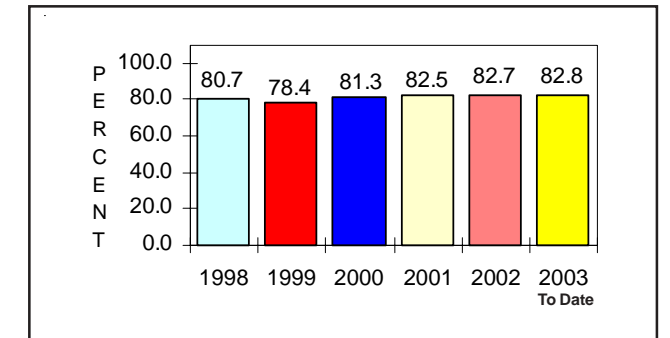
FOR VITAL EVENTS PROCESSED THROUGH FEBRUARY 31, 2003 ♦ PUBLISHED MARCH 2003

Data in this report reflect record flow by month of receipt and process rather than by month of occurrence.

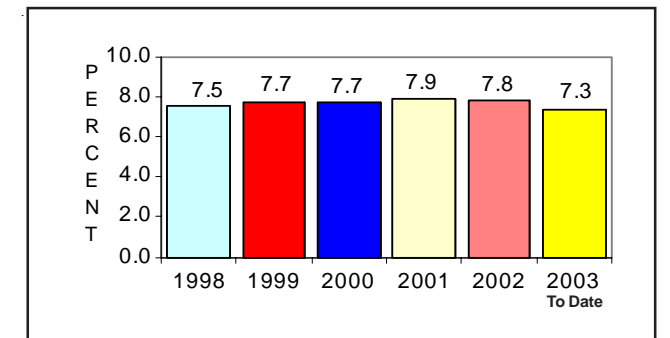
**NEW MEXICO RESIDENT INFANT MORTALITY RATE**  
 Infant, Neonatal, Postneonatal Rates Per 1,000 Live Births  
 1997-2000 Final Data - 2001-2003 Provisional



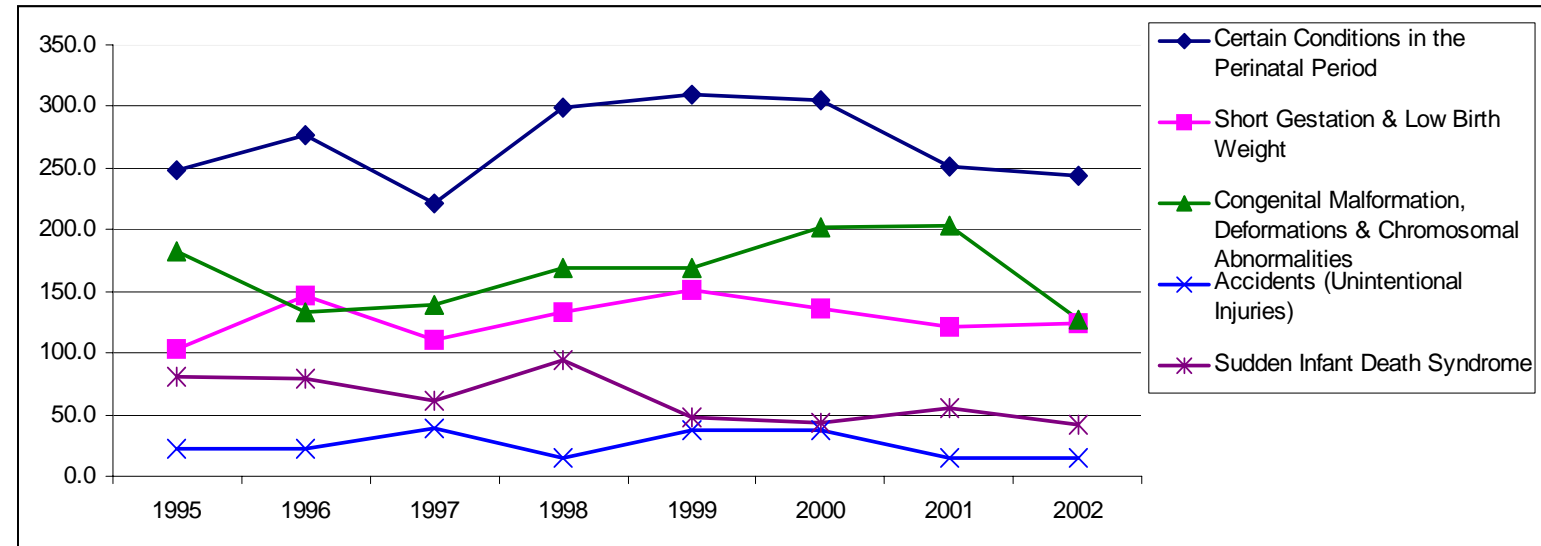
**NEW MEXICO RESIDENT LIVE BIRTHS**  
 Percentage Reporting Having Received  
 High Or Mid Level Prenatal Care  
 1997-2000 Final Data - 2001-2003 Provisional



**New Mexico Resident Live Births**  
 Percentage Low Birth Weight  
 1997-2000 Final Data - 2001-2003 Provisional



**INFANT MORTALITY RATES BY CAUSE**  
 RATES PER 100,000 LIVE BIRTHS 1995-2000 Final Data - 2001-2002 Provisional



NOTE: Causes of death for 1999-2002 are based on ICD-10 codes. Causes of death for 1995-1998 are based on ICD-9 codes. Comparability ratios have been applied to the 1995-1998 data.

# SUMMARY OF NATALITY VITAL STATISTICS

(Provisional Data, New Mexico Residents)

Feb-03

COUNTY	BIRTHS		% LOW BIRTHWEIGHT	% TO SINGLE WOMEN	% TO TEENS 15-17	% TO TEENS 18-19	PRENATAL CARE	
	This Month	Year to Date					LEVEL CARE	% BEGAN FIRST TRIMESTER
	Year to Date	Year to Date	Year to Date	Year to Date				
<b>State Total</b>	<b>2,394</b>	<b>4,621</b>	<b>7.3</b>	<b>47.8</b>	<b>5.7</b>	<b>10.8</b>	<b>82.8</b>	<b>66.1</b>
<b>DISTRICT 1</b>	<b>1,273</b>	<b>2,528</b>	<b>6.6</b>	<b>46.7</b>	<b>5.1</b>	<b>9.2</b>	<b>83.2</b>	<b>68.9</b>
Bernalillo	757	1,533	7.0	42.5	4.8	8.2	84.3	73.6
Cibola	51	81	4.9	76.5	9.9	14.8	80.2	64.2
McKinley	119	204	7.8	67.6	6.4	10.3	84.8	57.4
San Juan	155	314	5.7	53.2	3.8	12.1	78.0	50.6
Sandoval	94	212	6.1	40.1	4.7	5.7	84.0	73.1
Torrance	15	24	0.0	37.5	8.3	25.0	83.3	79.2
Valencia	82	160	5.6	42.5	7.5	11.3	81.9	69.4
<b>DISTRICT 2</b>	<b>252</b>	<b>639</b>	<b>10.5</b>	<b>49.3</b>	<b>5.9</b>	<b>11.3</b>	<b>85.9</b>	<b>59.5</b>
Colfax	17	25	20.0	56.0	12.0	16.0	88.0	72.0
Harding	0	0	0.0	0.0	0.0	0.0	0.0	0.0
Los Alamos	7	26	0.0	7.7	3.8	3.8	84.6	65.4
Mora	7	9	0.0	88.9	0.0	11.1	100.0	100.0
Rio Arriba	52	121	8.3	66.1	6.6	14.9	76.9	55.4
San Miguel	34	70	15.7	62.9	7.1	11.4	84.3	74.3
Santa Fe	98	319	11.0	40.4	5.0	10.3	90.0	53.9
Taos	32	61	9.8	57.4	8.2	9.8	80.3	65.6
Union	5	8	0.0	37.5	0.0	12.5	100.0	62.5
<b>DISTRICT 3</b>	<b>500</b>	<b>813</b>	<b>6.3</b>	<b>50.6</b>	<b>6.6</b>	<b>12.9</b>	<b>81.9</b>	<b>64.8</b>
Catron	1	2	0.0	50.0	0.0	0.0	100.0	50.0
Dona Ana	294	491	5.5	52.3	6.9	11.8	82.3	66.6
Grant	39	61	8.2	45.9	3.3	14.8	77.0	68.9
Hidalgo	3	6	0.0	50.0	16.7	16.7	50.0	50.0
Luna	39	65	10.8	60.0	7.7	20.0	69.2	43.1
Otero	95	144	7.6	42.4	6.3	14.6	91.7	69.4
Sierra	7	12	0.0	8.3	0.0	0.0	58.3	66.7
Socorro	22	32	3.1	65.6	9.4	9.4	81.3	56.3
<b>DISTRICT 4</b>	<b>369</b>	<b>641</b>	<b>8.3</b>	<b>47.4</b>	<b>6.4</b>	<b>14.0</b>	<b>78.9</b>	<b>63.5</b>
Chaves	46	140	10.7	48.6	6.4	12.9	83.6	75.0
Curry	81	108	6.5	41.7	5.6	7.4	88.0	64.8
DeBaca	1	3	33.3	66.7	0.0	33.3	100.0	33.3
Eddy	87	150	6.0	44.7	4.7	16.7	84.7	74.7
Guadalupe	5	11	18.2	36.4	18.2	9.1	81.8	72.7
Lea	104	152	9.2	53.3	7.2	13.8	57.2	40.1
Lincoln	13	25	16.0	44.0	4.0	16.0	92.0	84.0
Quay	13	20	5.0	50.0	5.0	25.0	85.0	60.0
Roosevelt	19	32	0.0	50.0	12.5	21.9	87.5	53.1

BIRTHS	NUMBER	LOW BIRTH WEIGHT		BIRTHS TO TEENS, 15-19		ABORTIONS	
		NUMBER	PERCENT	NUMBER	PERCENT	NUMBER	RATIO PER 1,000 LIVE BIRTHS
MONTH FEBRUARY 2003	<b>LIVE BIRTHS</b>						
TOTAL 2001 (Prov.)	27,112	2,148	7.9	4,525	16.7	5,134	189.4
TOTAL 2002 (Prov.)	26,696	2,085	7.8	4,343	16.3	4,862	182.1
Feb-03 Processing	<b>2,394</b>	<b>182</b>	<b>7.6</b>	<b>401</b>	<b>16.8</b>	<b>281</b>	<b>117.4</b>
2003 YTD	<b>4,621</b>	<b>338</b>	<b>7.3</b>	<b>763</b>	<b>16.5</b>	<b>524</b>	<b>113.4</b>

DEATHS	NUMBER	INFANT MORTALITY		MATERNAL DEATHS	FETAL DEATHS	
		NUMBER	RATE*		NUMBER	RATIO PER 1000 LIVE BIRTHS
MONTH FEBRUARY 2003	<b>DEATHS</b>					
TOTAL 2001 (Prov.)	14,048	174	6.4	6	64	2.4
TOTAL 2002 (Prov.)	11,597	123	4.6	5	75	2.8
Feb-03 Processing	<b>1,130</b>	<b>8</b>	<b>3.3</b>	<b>0</b>	<b>8</b>	<b>3.3</b>
2003 YTD	<b>3,533</b>	<b>42</b>	<b>9.1</b>	<b>0</b>	<b>32</b>	<b>6.9</b>

INFANT DEATHS	MONTH FEBRUARY 2003	Age at Death (Days)			NEONATAL		POSTNEONATAL	
		<1	1-6	7-27	NUMBER	RATE	NUMBER	RATE
TOTAL 2001 (Prov.)		58	22	28	108	4.0	66	2.4
TOTAL 2002 (Prov.)		47	18	23	88	3.3	35	1.3
Feb-03 Processing		<b>3</b>	<b>0</b>	<b>4</b>	<b>7</b>	<b>2.9</b>	<b>1</b>	<b>0.4</b>
2003 YTD		<b>14</b>	<b>7</b>	<b>12</b>	<b>33</b>	<b>7.1</b>	<b>9</b>	<b>1.9</b>

\*Rate per 1,000 live births. Final 2000 rates for United States: Infant Mortality 6.9, Neonatal 4.6, Postneonatal 2.3. Provisional totals for prior years may include records processed in 2003.

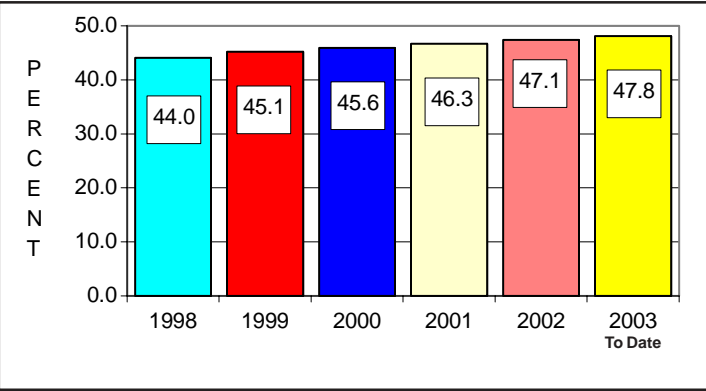
## (New Mexico Residents)

Causes	ICD-10	2003 Thru	Provisional 2002
		FEBRUARY 2003	Feb-03 Rate*
All Causes		1,130	625.2
Diseases of the Heart	I00-I09, I11, I13, I20-I51	231	141.8
Malignant Neoplasms	C00-C97	249	137.8
Accidents (Unintentional Injuries)	V01-X59, Y85-Y86		
Motor Vehicle	Selected codes from V02-V89	27	16.8
Other Accidents	Residual of V01-X59, Y85-Y86	45	25.0
Hypertension	I10, I12	31	9.5
Cerebrovascular Disease	I60-I69	53	30.3
Chronic Low er			
Respiratory Diseases	J40-J47	84	39.9
Influenza/Pneumonia	J10-J18	40	16.0
Diabetes Mellitus	E10-E14	48	26.7
Chronic Liver Disease & Cirrhosis	K70, K73-K74	17	13.1
Atherosclerosis	I70	19	6.5
Intentional Self-Harm (Suicide)	X60-X84, Y87.0	22	14.8
Assault (Homicide)	X85-Y09, Y87.1	8	6.8
Congenital Malformations, Deformations & Chromosomal Anomalies	Q00-Q99	3	3.1

\*Rate Per 100,000 Population

Beginning with 1999 data New Mexico Vital Records & Health Statistics began using the 10th revision of the *International Classification of Diseases* to code cause of death.

PERCENT OF NEW MEXICO RESIDENT LIVE BIRTHS TO SINGLE WOMEN  
1997-2000 Final Data - 2001-2003 Provisional



PERCENT OF NEW MEXICO RESIDENT LIVE BIRTHS TO TEENS, 15-19  
1997-2000 Final Data - 2001-2003 Provisional

